

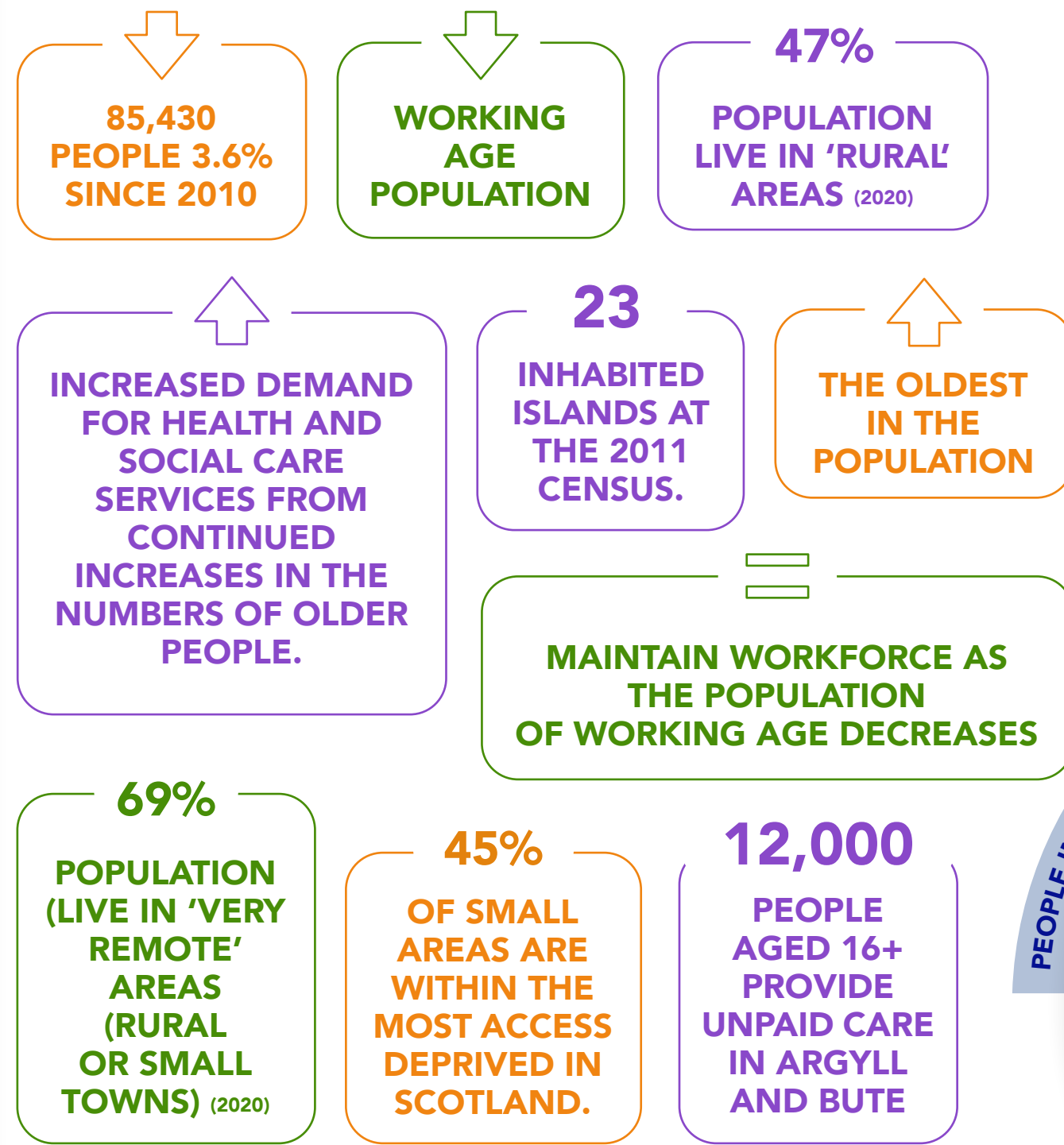
JOINT STRATEGIC PLAN 2022-2025

PEOPLE IN ARGYLL AND BUTE WILL LIVE LONGER, HEALTHIER INDEPENDENT LIVES

[READ HERE](https://bit.ly/jsp-abhscp-2022-25)

[HTTPS://BIT.LY/JSP-ABHSCP-2022-25](https://bit.ly/jsp-abhscp-2022-25)

WHAT WE ARE PLANNING FOR



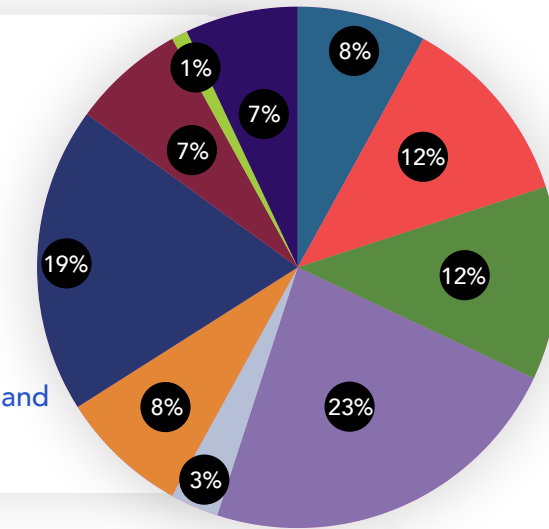
OUR HSCP 8 STRATEGIC OBJECTIVES

- Reduce the number of avoidable emergency hospital admissions & minimise the time that people are delayed in hospital
- Promote health and wellbeing across our communities and age groups
- Support people to live fulfilling lives in their own homes for as long as possible
- Support unpaid carers, to reduce the impact of their caring role on their own health and wellbeing
- Institute a continuous quality improvement management process across the functions delegated to the partnership
- Support staff to continuously improve the information, support, and care they deliver
- #KEEPTHEPROMISE**
- Efficiently and effectively manage all resources to deliver best value

BUDGET 2022/23 - £320.9 MILLION



- Children & Families
- Older People social care
- Mental Health & Learning Disability & Physical Disability
- Commissioned Services incl NHS GG&C
- Dentists, Chemists and Opticians
- GP Services
- Hospital and Community Services
- Prescribing
- Public Health
- Management and Corporate

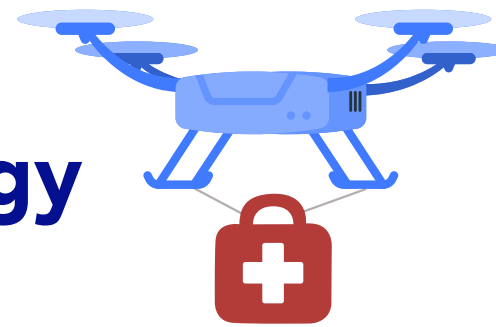


HSCP SERVICE AREAS

Children & Young People



Technology & Digital Strategy



Violence Against Women and Girls



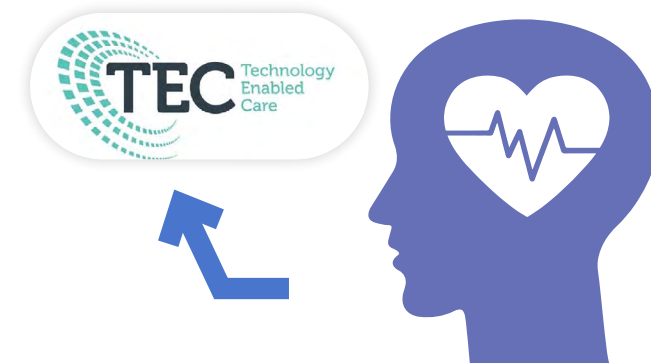
Public Health



Older Adults



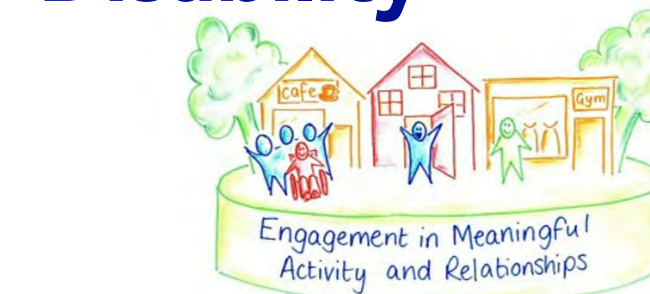
Mental Health



Primary Care



Learning Disability



Carers



Compassion

Integrity

Excellence

Leadership

Respect

Continuous Learning

