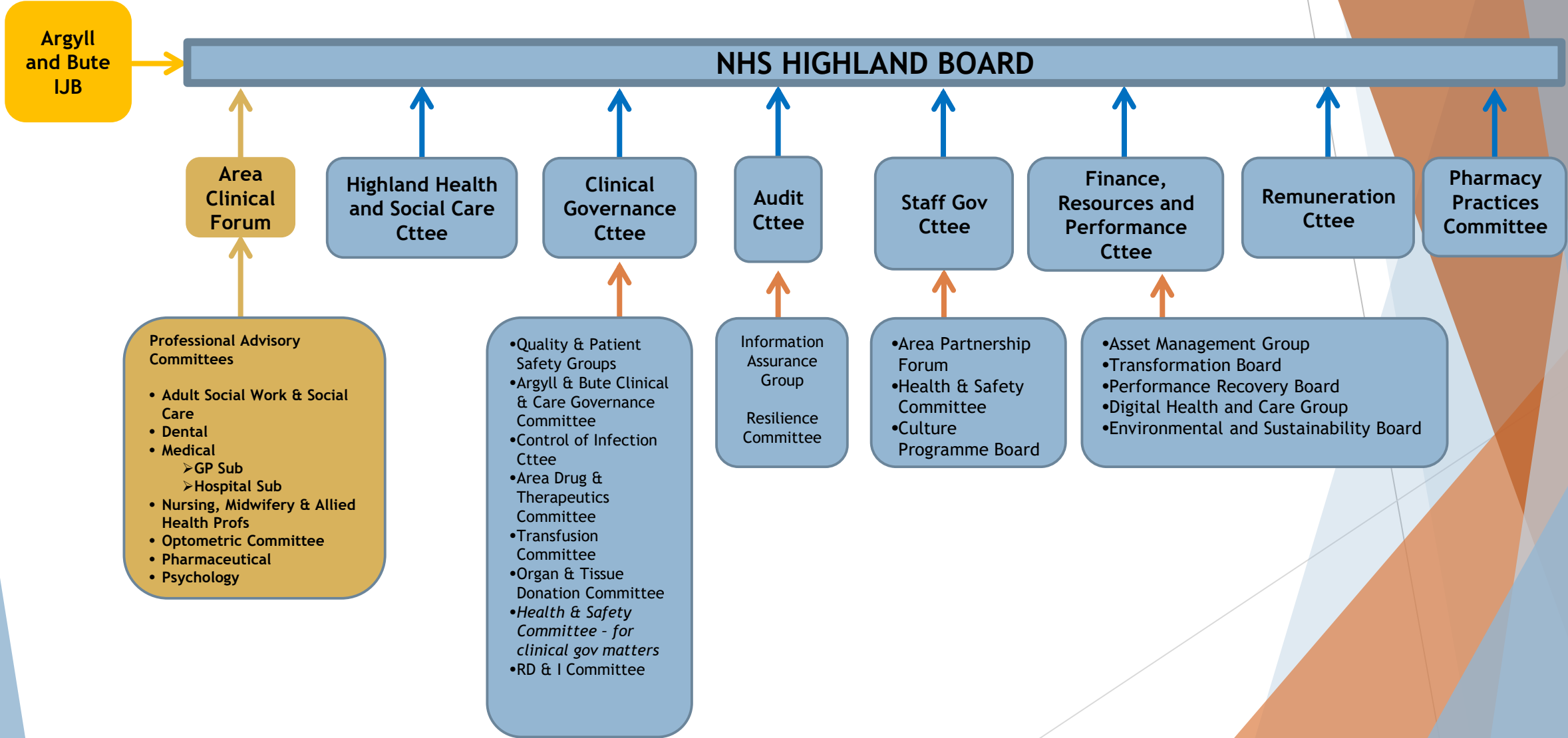


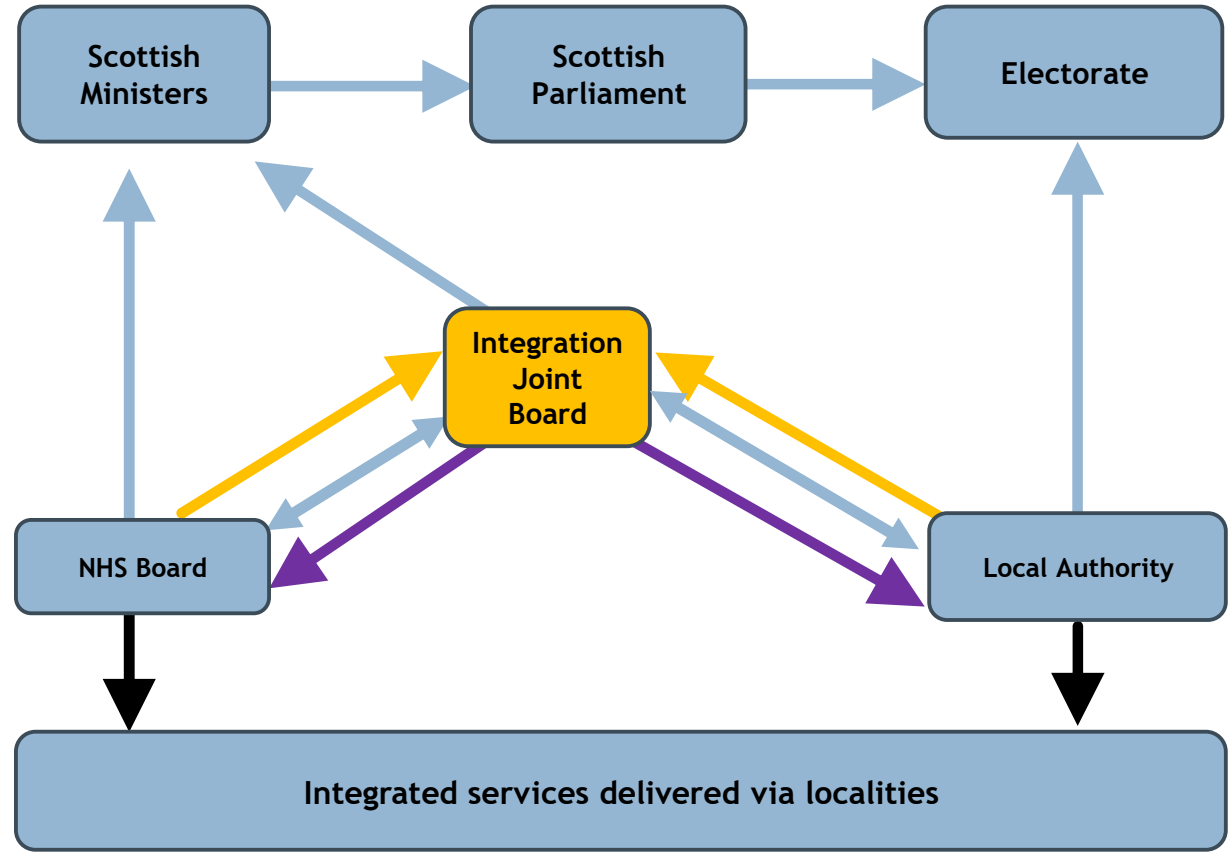
**NHS Highland  
Governance Map**



**Model of Integration – Integration Joint Board (body corporate)**

Body Corporate  
NHS Boards and Councils  
delegate functions to an IJB

The IJB is jointly accountable to  
the NHS Board and the Council  
through its membership, the  
integration scheme and the  
strategic plan



## Functions and delegations Argyll and Bute Integration Joint Board

### Argyll and Bute Integration Joint Board

**Purpose:** to plan for and deliver high quality health and social care services

**Functions:**

- All NHS services that the legislation permits for delegation.
- All Adult social work services.
- All Children & Families social work services.
- All Criminal Justice social work services.

**Membership:**

NHS Highland: Graham Bell (Vice Chair), Susan Ringwood, Karen Leach, Emily Woolard  
Argyll and Bute Council: Amanda Hampsey (Chair), Gary Mulvaney, Keiron Green, and Douglas Philand

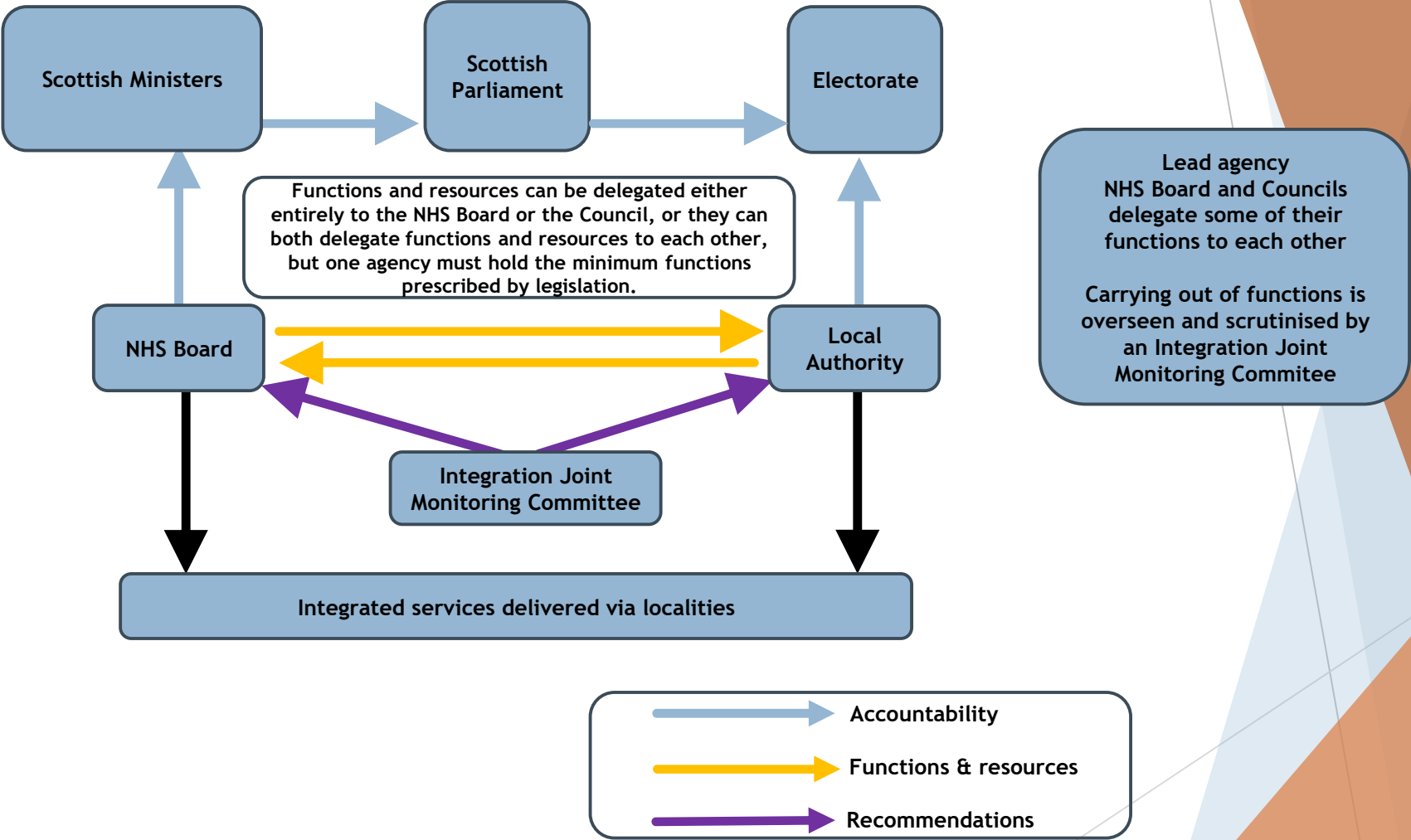
Hospital inpatient (scheduled and unscheduled) , Rural General Hospitals, Mental Health, Paediatrics, Community Hospitals, Hospital Outpatient Services, NHS Community Services, Community Children's Services, Public Health, GP Services, GP Prescribing, General Dental, Opticians and Community Pharmacy, Support Services, Contracts and SLAs with other NHS boards covering adults and children

NHS Highland  
Board

Social Work Services for Adults and Older People  
Social work services for children and young people  
Social Work Criminal Justice Services

Argyll and  
Bute Council

**Model of Integration – Lead Agency Model**



## Highland Health and Social Care Partnership Lead Agency

