

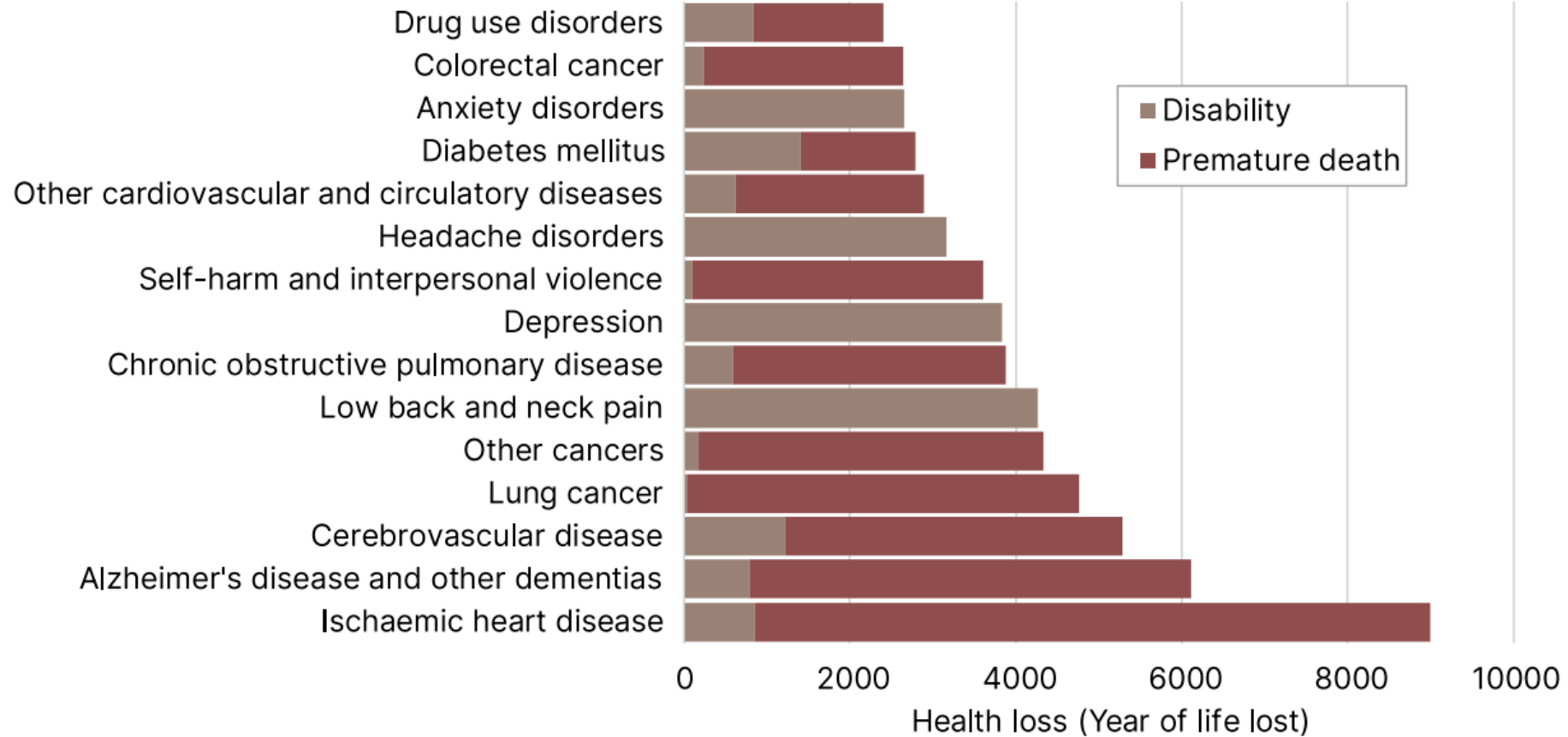
# DPH Annual Report 2024

Tim Allison

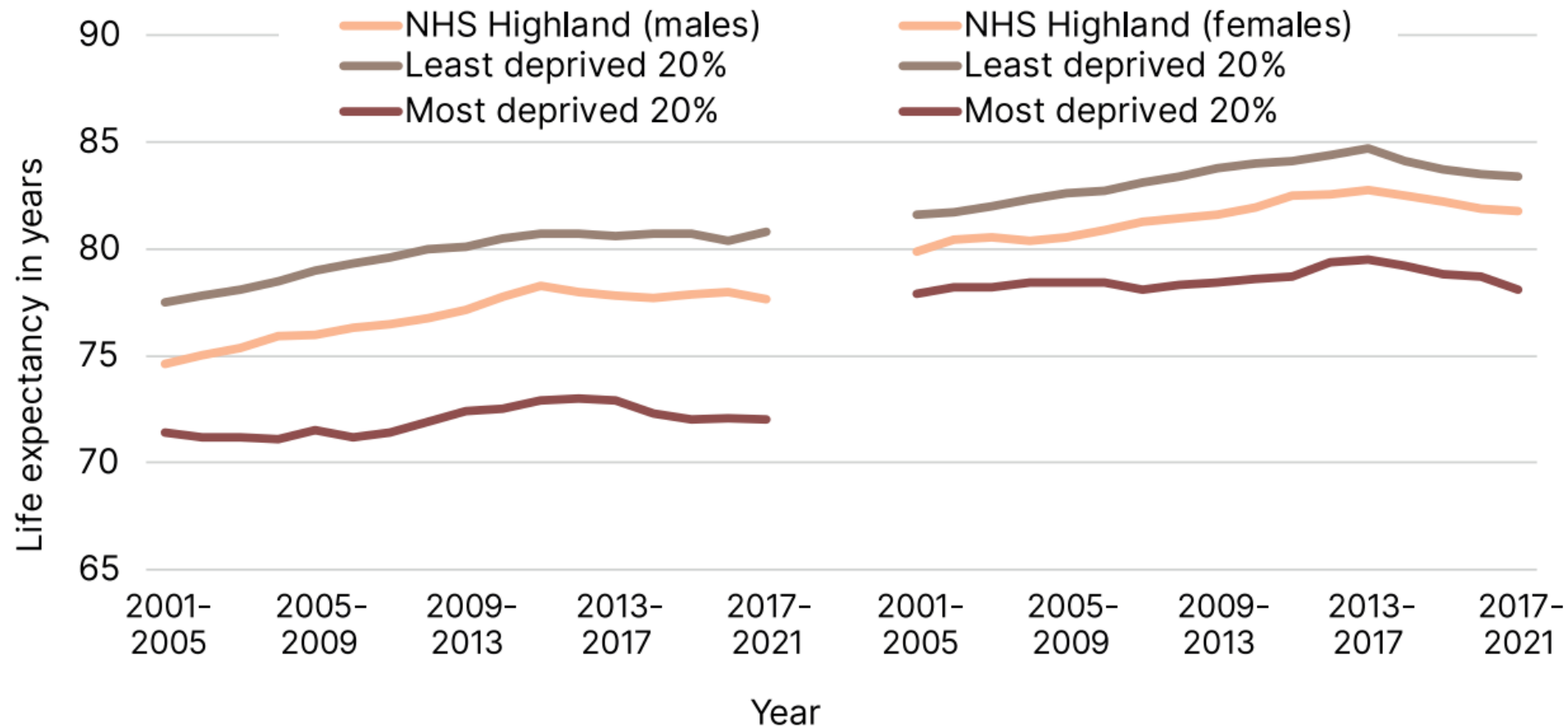
Director of Public Health

- At the heart of the NHS
- Crucial for the work of NHS Highland
- Clear at a population and an individual level
- At the foundation of future work for the Board
- Many causes, including access to care
- Fairness

# Leading Causes of Health Loss in NHSH



# Life Expectancy and Inequalities

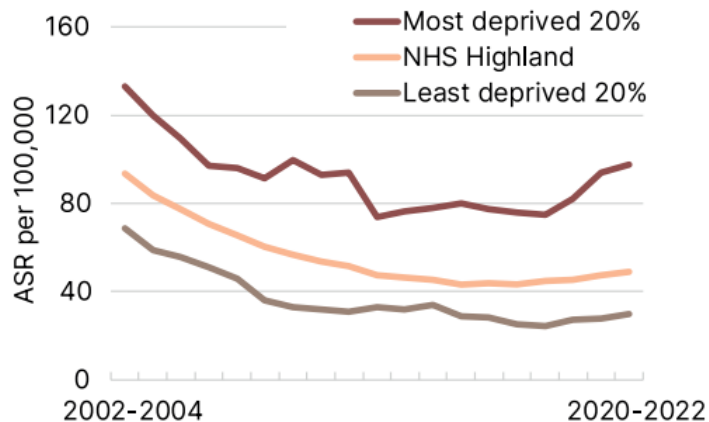


- National or international comparison
  - Population group comparison e.g. by wealth
  - Risk factor comparison e.g. alcohol
  - Comparison of outcomes for a given condition
  - Comparison of ease of access to treatment
  - Consideration of different ways to tackle inequalities
- 
- We need to consider all these

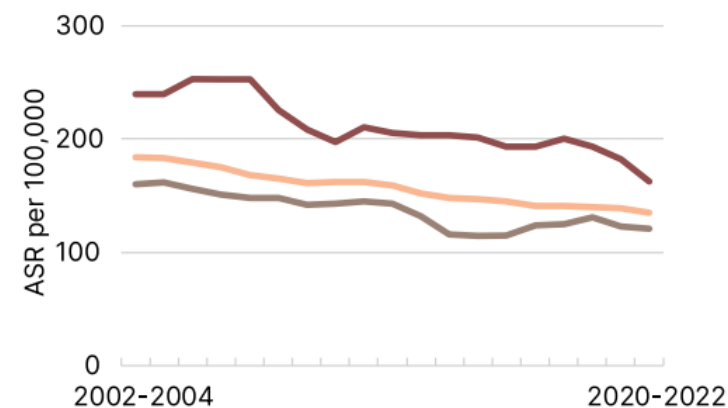
- Patient: “Doctor, I have come to see you because I am suffering from a terrible health inequality.”
- Doctor: “Well then, you had better move to somewhere with a higher life expectancy.”

# Trends in some Health Inequalities

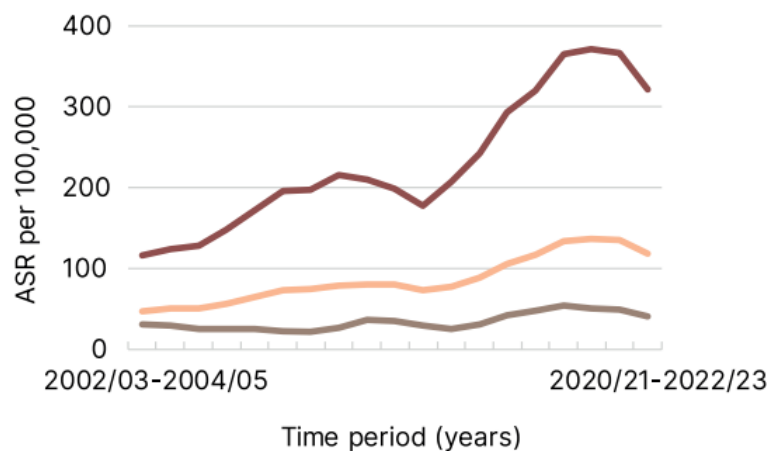
**Early deaths from coronary heart disease (under 75)**



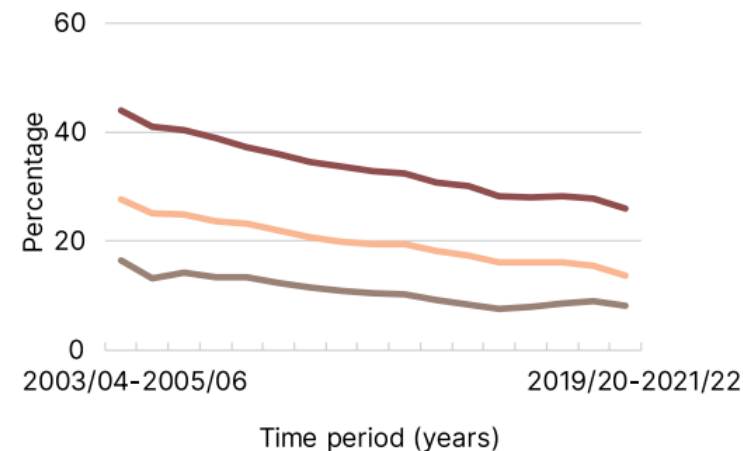
**Early deaths from cancer (under 75)**



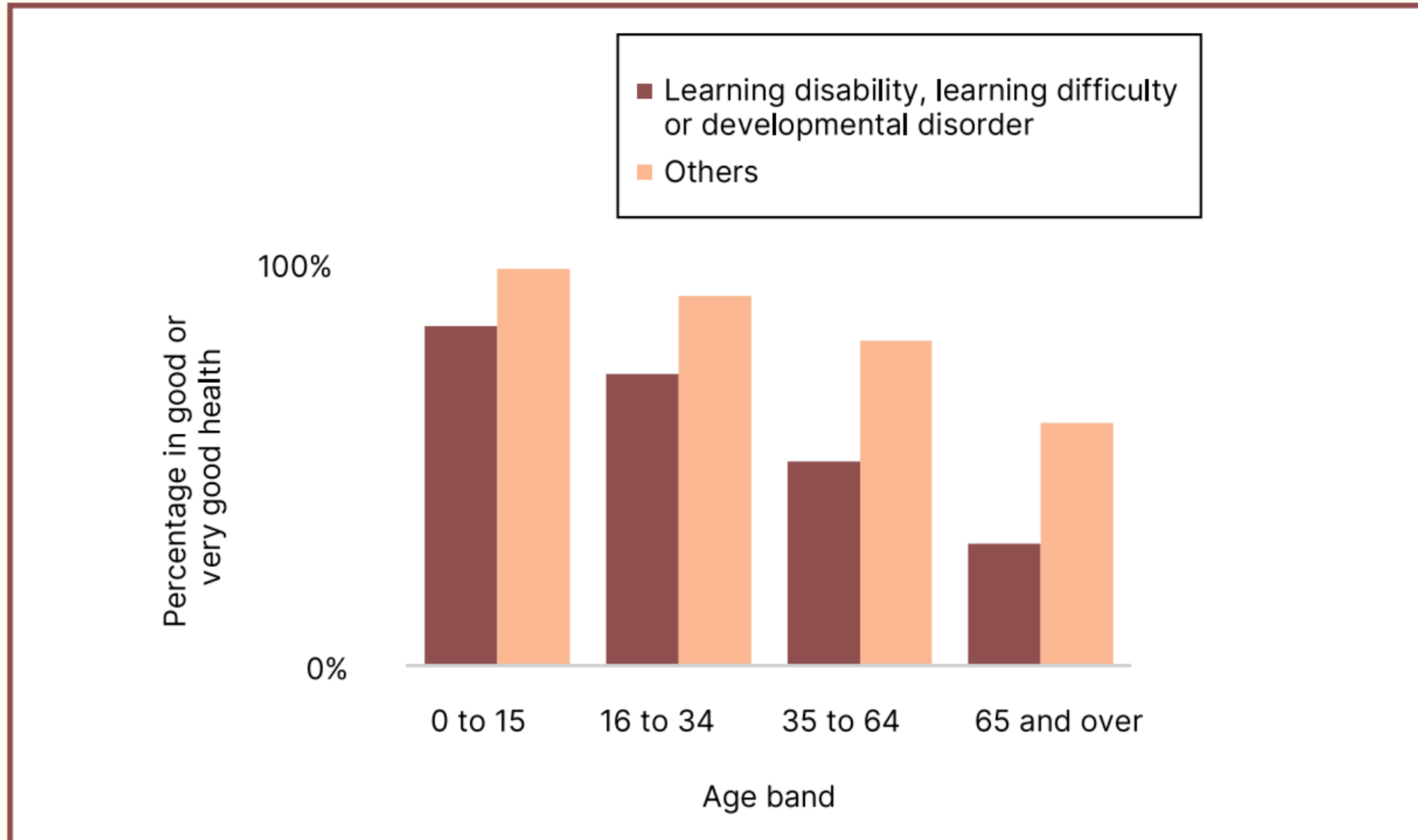
**Drug-related hospital admissions**



**Percentage of women smoking at booking**



# Health Inequalities: Learning Disability





# Some of the Recommendations

- NHS Highland and its partners should regularly review and monitor progress in reducing health inequalities
- Highland and Argyll and Bute Community Planning Partners should consider the best ways to tackle local health inequalities and how to learn from models such as Collaboration for Health Equity and place-based approaches
- Public sector organisations in Highland and Argyll and Bute should acknowledge the poor health experienced by underrepresented groups and address the inequalities with help from the skills and resources of the groups. This includes building strong collaborative relationships with those in position of trust within communities.
- NHS Highland should ensure that health inequalities are actively monitored as part of cancer management and across all services
- NHS Highland should address health inequalities across the entire cancer pathway from prevention to rehabilitation.

# Questions